

MERGEXR

STUDIO INFORMATION PACK

STUDIO 10 | 10 FINWAY
DALLOW ROAD | LUTON LU1 1TR

WWW.MERGEXR.STUDIO

Welcome to Studio 10, one of the UK's largest virtual production studios, combining both green screen and LED volume. Alongside the studio we provide a comprehensive equipment rental offering, providing 24/7 service 365 days a year.

STUDIO 10 HIRE RATES

SHOOT/RELIGHT/SET UP DATE RATE	£3,500
FRESHLY PAINTED GREEN FLOOR	£400
OVERTIME PER HOUR UNTIL MIDNIGHT	£240
OVERTIME PER HOUR AFTER MIDNIGHT	£480
WEEKEND SURCHARGE PER DAY	£400

EQUIPMENT HIRE

CAMERA PACKAGES

Select your camera:

ARRI ALEXA MINI LF
SONY VENICE 1
SONY VENICE 2 8K
ARRI ALEXA LF STUDIO
CANON C500 MK II FF5.9K

And add on your lens & accessories package:

Package 1

Signature Prime Lens
Matt box
WC4 Remote
Head & Tripod

Package 2

Zeiss Supreme Prime lens
Matt box
Remote Cmotion
Head & Tripod

Package 3

Cooke Anamorphic Lens
Matt box
FF5 Follow Focus
Head & Tripod

Our Full range of MergeXR Equipment rentals can be found at: www.mergexr.studio/rentals

WWW.MERGEXR.STUDIO

EQUIPMENT HIRE

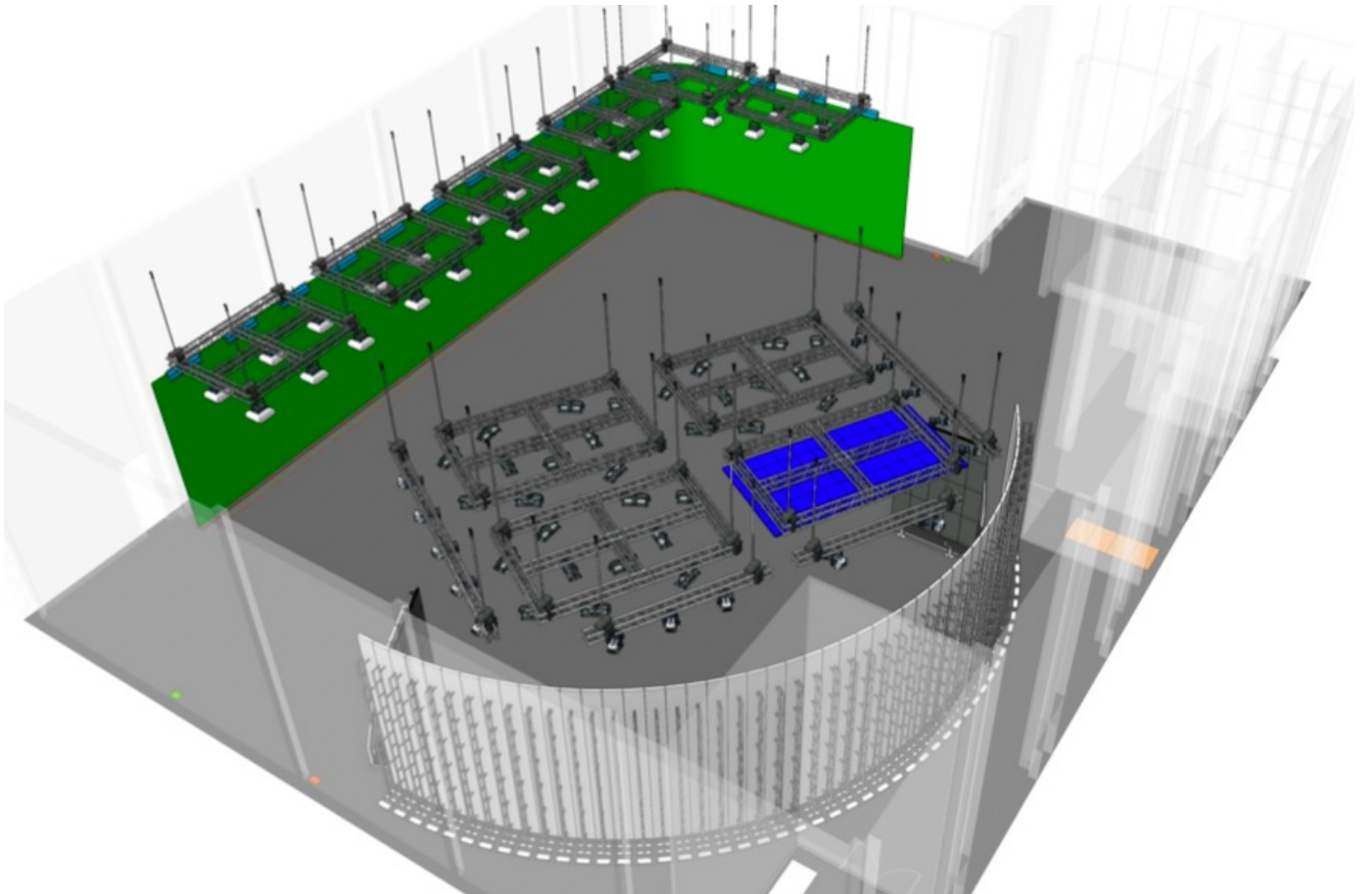
LIGHTING PACKAGES

- 1. ARRIMAX 18/12 KW DAYLIGHT KIT (4-LEAF BARNDOOR, HEAD TO BALLAST CABLE, ELECTRONIC BALLAST ORDINARY)**
- 2. ARRI M-60/90 DAYLIGHT KIT (4-LEAF BARNDOOR, HEAD TO BALLAST CABLE, ELECTRONIC BALLAST ORDINARY)**
- 3. ARRI M-40/25 DAYLIGHT KIT (4-LEAF BARNDOOR, HEAD TO BALLAST CABLE, ELECTRONIC BALLAST ORDINARY)**
- 4. ARRI M-18 DAYLIGHT KIT (4-LEAF BARNDOOR, HEAD TO BALLAST CABLE, ELECTRONIC BALLAST ORDINARY)**
- 5. ARRI M-8 DAYLIGHT KIT (4-LEAF BARNDOOR, HEAD TO BALLAST CABLE, ELECTRONIC BALLAST ORDINARY)**
- 6. ARRI ORBITOR PACKAGE**

Our Full range of MergeXR Equipment rentals can be found at: www.mergexr.studio/rentals

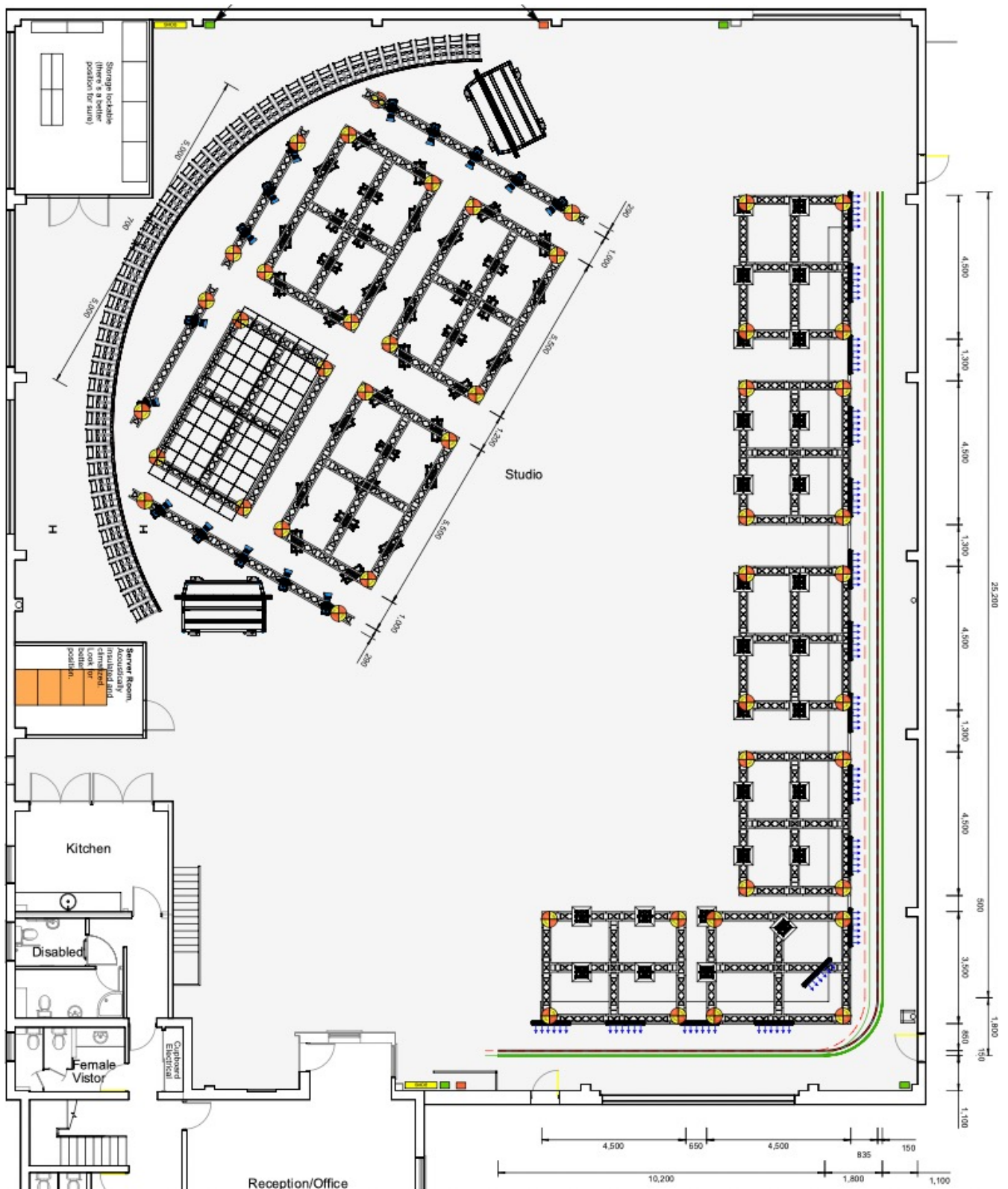
WWW.MERGEXR.STUDIO

STUDIO 10 - MAIN STUDIO



WWW.MERGEXR.STUDIO

STUDIO 10 - MAIN STUDIO



WWW.MERGEXR.STUDIO

STUDIO 10 INFORMATION

STUDIO

L SHAPED GREEN COVE – 25m x 12 x 5m

STUDIO IS SUPPLIED WITH A FRESHLY PAINTED FLOOR

51ft (W) x 64ft (L)

3 x Drive in Access doors 12ft (W) X12ft (H)

Motorised Lighting Grid (SWL 2000Kg)

HMU+Wardrobe, Production, Office space Available

Ample secure parking

POWER DISTRIBUTION

3Ø @200A Per Phase

BOX 1

POWERLOCK 3Ø

125A 3Ø (Switchable RCD) 63A 3Ø (Switchable RCD) 6 x 63A 1Ø

3 x 32A 1Ø

6x 16A 1Ø

VIRTUAL PRODUCTION SERVICES

Alongside the studio, MergeXR provides extensive integrated VP services, including:

- Storyboards
- Previsualization
- Asset creation and animation
- Motion Capture
- Volumetric capture

For further information please contact us:

Call: 07740 593329

Email: Marketing@mergexr.studio

WWW.MERGEXR.STUDIO